

# Daily Torque Check System Instruction Manual

Tohnichi Mfg.Co.,Ltd.

# Table of Contents

<b>1. System Requirements and Install Instructions .....</b>	<b>1</b>
<b>1.1 System Requirements .....</b>	<b>1</b>
<b>1.2 Installation Instructions .....</b>	<b>1</b>
<b>2. Running Daily Torque Check System .....</b>	<b>3</b>
<b>3. Menu Icon Feature .....</b>	<b>3</b>
<b>4. Settings .....</b>	<b>5</b>
<b>5. To Torque Wrench Entry and Update.....</b>	<b>7</b>
<b>5.1 Registering New Torque Wrench.....</b>	<b>7</b>
<b>5.2 Updating Torque Wrench Information .....</b>	<b>8</b>
<b>5.3 Deleting Torque Wrench Information.....</b>	<b>9</b>
<b>6. Torque Wrench Measurement.....</b>	<b>10</b>
<b>7. Measurement Data Inquiry .....</b>	<b>12</b>
<b>8. Support .....</b>	<b>13</b>

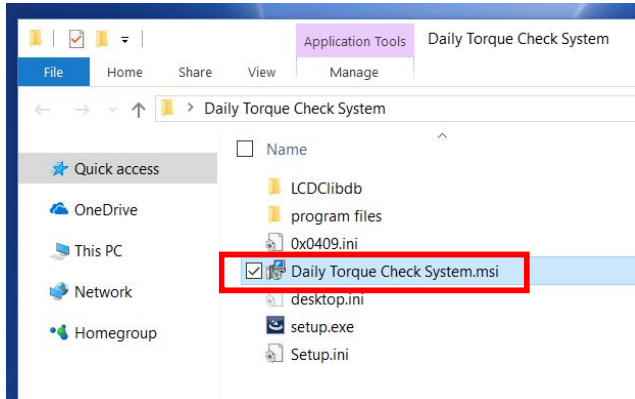
## 1. System Requirements and Installation Instructions

### 1.1 System Requirements

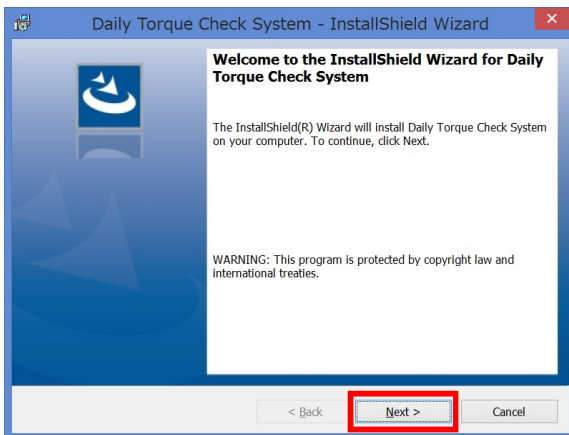
- OS: Windows 7, 8 or 10
- .NET Framework 4.0 or later

### 1.2 Installation Instructions

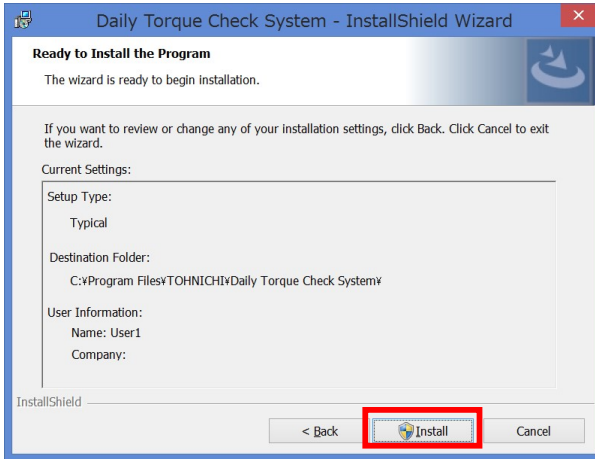
- (1) Double-click the **Daily Torque Check System** file in the folder to launch the installer.



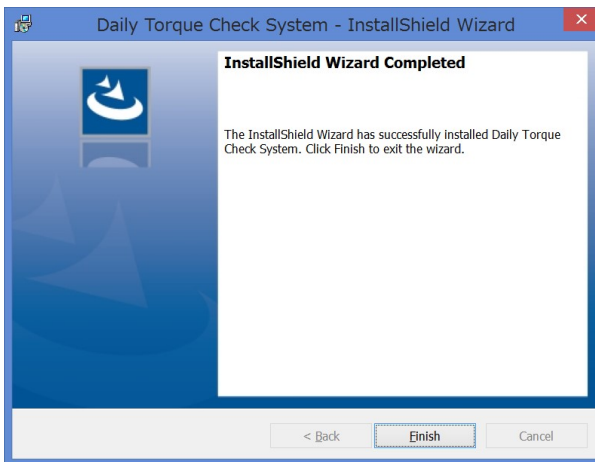
- (2) Click “**Next**” to continue.



- (3) Click **"Install"**. Your PC/Laptop may ask you **"Do you want to allow this app from an unknown publisher to make changes to your device?"** and then click **"Yes"** to begin the installation.



- (4) Click **"Finish"** to complete installation.



## 2. Running Daily Torque Check System

Once the installation has successfully completed, you will see the following:

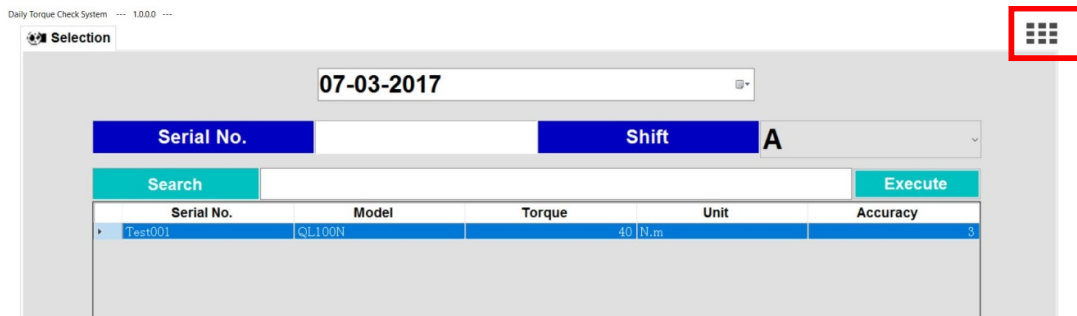
- Daily Torque Check System shortcut on your desktop.



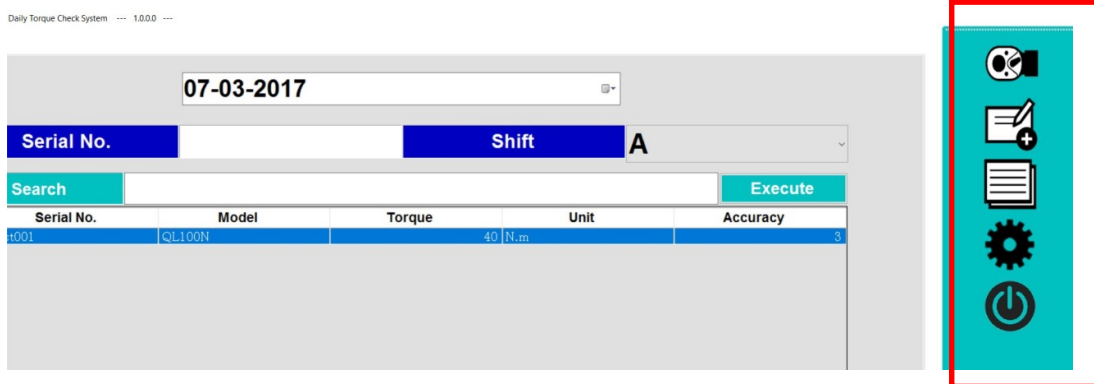
Double click the “Daily Torque Check System” from the desktop icon shortcut to start.

## 3. Running Daily Torque Check System

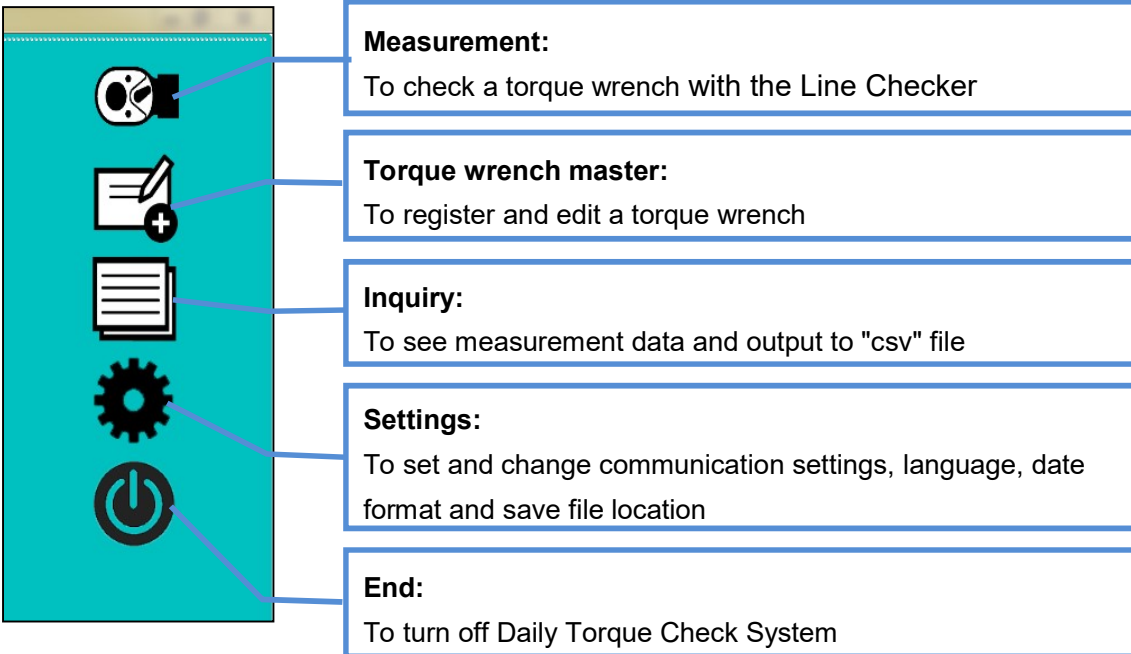
- (1) Click The **Menu icon** on the top-right corner.



- (2) The **Menu icon bar** will appear up on the right.

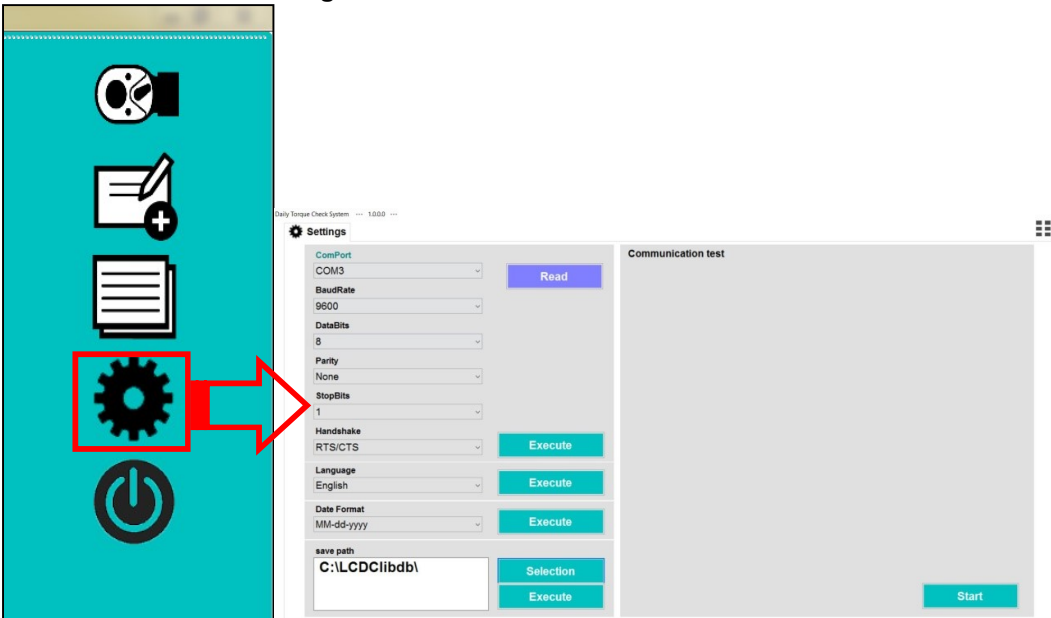


(3) Description of Menu icons.



## 4. Settings

(1) Click the **Settings icon** on the menu bar.

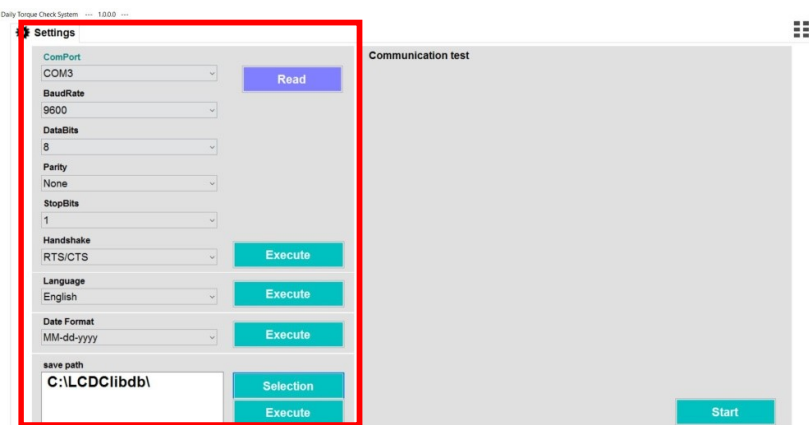


(2) Select the parameters from the pulldown menu and click **"Execute"** corresponding to each section to save the settings. The communication settings have to match your Line Checker's communication settings.

\*If you do not click **"Execute"** the settings won't be updated.

Once you click **"Read"** the **ComPort pulldown list** will be updated.

The default csv file save location can be changed if you click Selection on the **Save path** section. Click **"Execute"** on the **Save path** section to update your setting.



- (3) Click "**Start**" to launch the **Communication test**. Please make sure that your communication settings are correct.

Daily Torque Check System --- 1.0.0.0 ---

### Settings

**ComPort**  
COM6

**BaudRate**  
9600

**DataBits**  
8

**Parity**  
None

**StopBits**  
1

**Handshake**  
RTS/CTS

**Language**  
English

**Date Format**  
MM-dd-yyyy

**save path**  
C:\Users\TAC\Desktop\

### Communication test

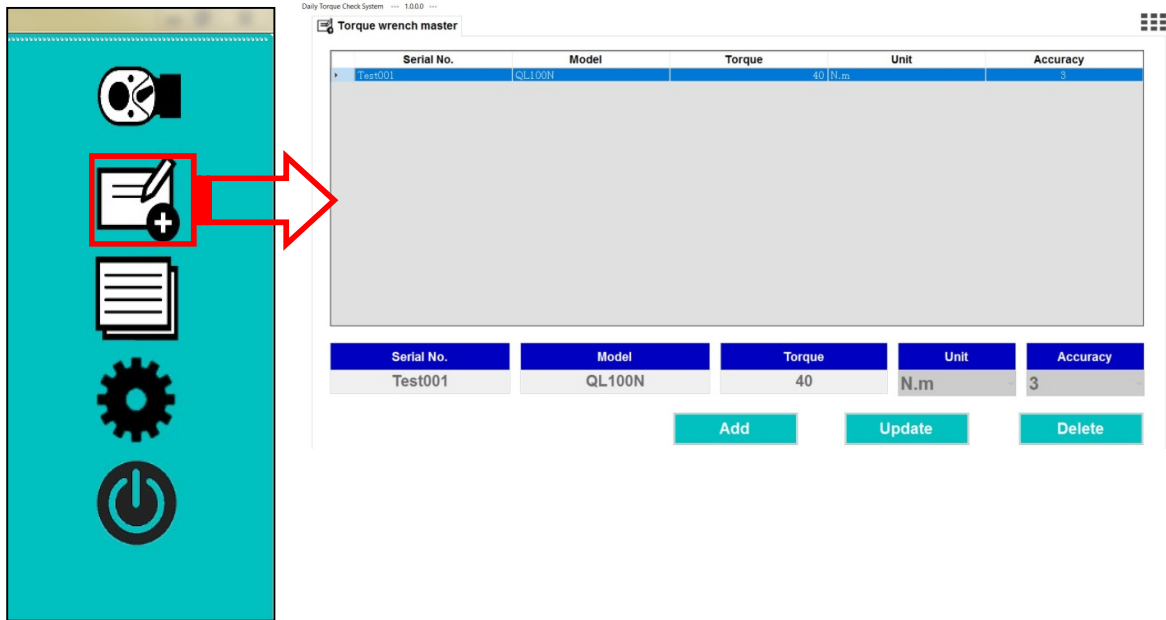
Start communication.

```
RE,0168, 029.8,A,LO,07/03,16:48  
RE,0167, 069.1,A,HI,07/03,16:48  
RE,0166, 030.4,A,OK,07/03,16:48  
RE,0165, 030.0,A,OK,07/03,16:48  
RE,0164, 030.2,A,OK,07/03,16:48  
RE,0163, 029.9,-,--,07/03,16:47  
RE,0162, 030.0,-,--,07/03,16:47  
RE,0162, 037.1,-,--,07/03,16:46  
RE,0161, 030.2,-,--,07/03,16:46  
RE,0160, 030.2,-,--,07/03,16:46  
RE,0159, 030.2,-,--,07/03,16:46  
RE,0158, 029.9,-,--,07/03,16:46  
RE,0157, 030.2,-,--,07/03,16:46  
RE,0156, 030.4,-,--,07/03,16:46
```



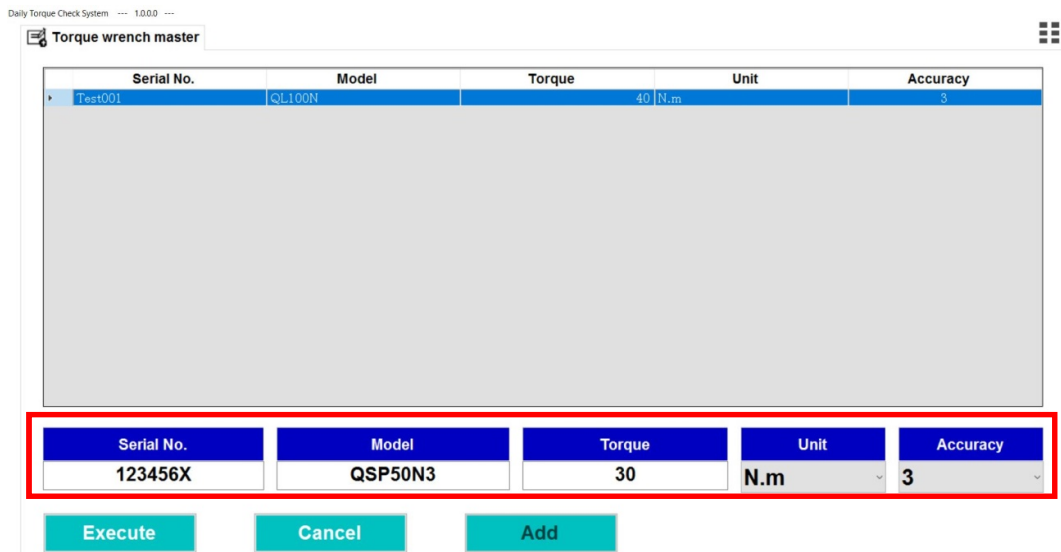
## 5. To Torque Wrench Entry and Update

Click the **Torque wrench master icon** on the menu bar.



### 5.1 Registering a new torque wrench

- (1) Click "Add" and enter **Serial number**, **Model**, **Preset torque value**, **Unit of measure** and **Accuracy**. Click "Execute" to register the new torque wrench information.



- (2) If the registration is successful the torque wrench information will be added to the list.

Daily Torque Check System --- 1.0.0.0 ---

Torque wrench master

Serial No.	Model	Torque	Unit	Accuracy
123456X	QSP50N3	30	N.m	3
Test001	QL100N	40	N.m	3

Serial No.	Model	Torque	Unit	Accuracy
123456X	QSP50N3	30	N.m	3

Add Update Delete

## 5.2 Update torque wrench information

- (1) If you would like to edit torque wrench information select the desired torque wrench on the list and then click "Update".

Daily Torque Check System --- 1.0.0.0 ---

Torque wrench master

Serial No.	Model	Torque	Unit	Accuracy
123456X	QSP50N3	30	N.m	3
Test001	QL100N	40	N.m	3

Serial No.	Model	Torque	Unit	Accuracy
Test001	QL100N	40	N.m	3

Add Update Delete

(2) **Serial number** is fixed, you can change **Model, Torque, Unit** and **Accuracy**.  
 Click **"Execute"** to update your settings.

Daily Torque Check System --- 1.0.0.0 ---

Torque wrench master

Serial No.	Model	Torque	Unit	Accuracy
123456X	QSP50N3	30	N.m	3
Test001	QL100N	40	N.m	3

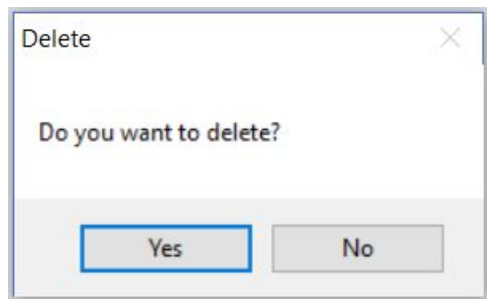
  

Serial No.	Model	Torque	Unit	Accuracy
Test001	QL100N	40	N.m	3

Execute      Cancel      Update

### 5.3 Delete Torque Wrench Information

Select a torque wrench which you would like to delete on the list and then click Delete.  
 The window will show up that asks **"Do you want to delete?"** and click **Yes** to delete.

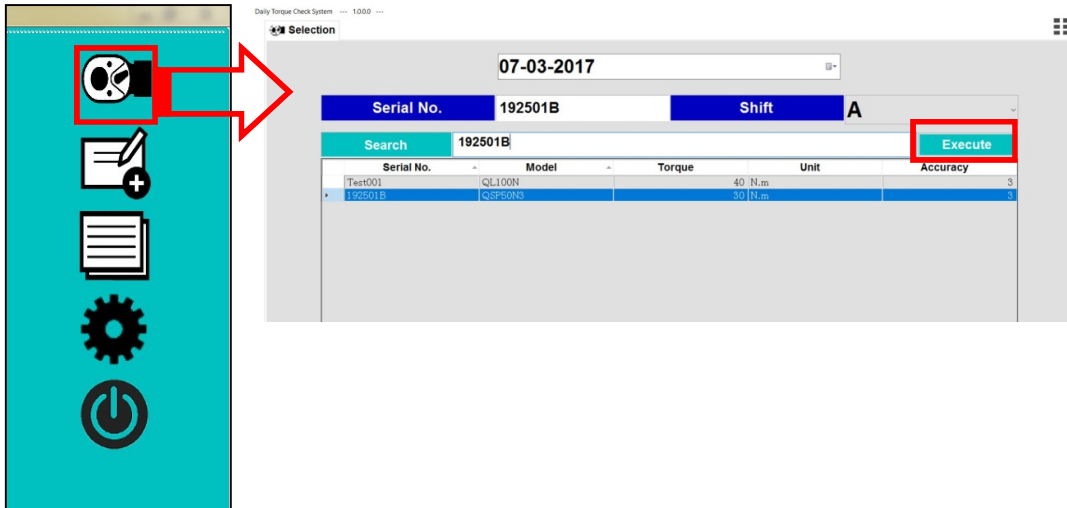


## 6. Torque Wrench Measurement

- (1) Click the **Measurement icon** on the menu bar.

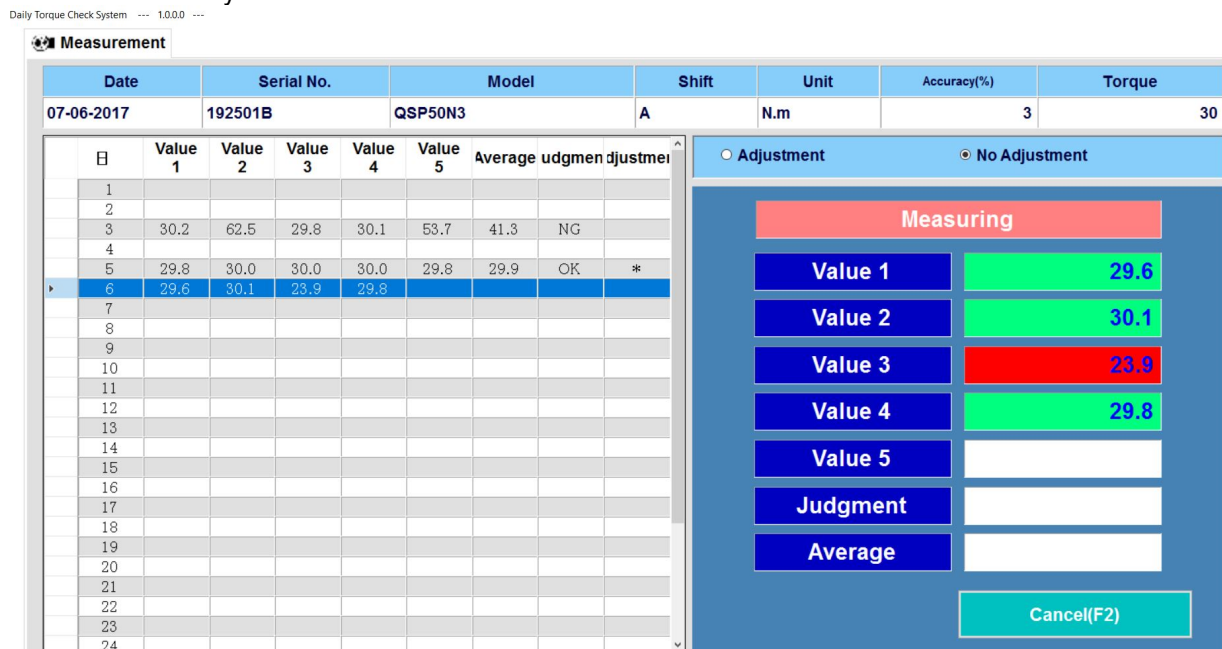
Confirm the **Date**. Select your **Shift** from "A" or "B" and a torque wrench on the list. You can search from Serial number if you enter a Serial number in the search box.

After you select a torque wrench click "**Execute**" to start measurement.



- (2) Measure the torque wrench 5 times on your Line Checker. The results will be shown Green if in tolerance or Red if out of tolerance.

If you click "**Adjustment**" in the **Measuring window** the software shows this tool was adjusted as indicated by an asterisk in the tool data.



- (3) Once you measure 5 times the software will display **Judgment** and **Average of the 5 readings**.  
 Click **"Save"** to record measurement or **"Previous"** to cancel it.

Daily Torque Check System --- 1.0.0.0 ---

**Measurement**

Date	Serial No.	Model	Shift	Unit	Accuracy(%)	Torque
07-07-2017	192501B	QSP50N3	A	N.m	3	30

日	Value 1	Value 2	Value 3	Value 4	Value 5	Average	udgmen	djustmei
1								
2								
3	30.2	62.5	29.8	30.1	53.7	41.3	NG	
4								
5	29.8	30.0	30.0	30.0	29.8	29.9	OK	*
6	29.6	30.1	23.9	29.8	29.9	28.7	NG	
7	30.2	29.9	29.9	29.5	29.7	29.8	OK	
8								
9								
10								
11								
12								
13								
14								
15								
16								
17								
18								
19								
20								
21								
22								
23								
24								

Adjustment       No Adjustment

**Measurement completed.**

Value 1	30.2
Value 2	29.9
Value 3	29.9
Value 4	29.5
Value 5	29.7
Judgment	OK
Average	29.8

Save(F1)

Previous(F2)

## 7. To Measurement Data Inquiry

(1) Click the **Inquiry** icon on the menu bar.

(2) Select a torque wrench or search by serial number on the search box and click **"Execute"**. You can see the measurement data. You may click **"Delete"** if you don't need this measurement data.

Click **"csv"** the software will output a csv format file of measurement data for the torque wrenches that are shown on the list to the default location.

## 8. Support

If you have any questions please feel free to contact Tohnichi or one of our authorized dealers.

### **Tohnichi Mfg. Co., Ltd.**

2-12, Omori-Kita, 2-Chome Ota-ku, Tokyo 143-0016, Japan  
Tel +81-3-3762-2455  
Fax +81-3-3761-3852  
E-mail [overseas@tohnichi.co.jp](mailto:overseas@tohnichi.co.jp)  
Website <https://en.global-tohnichi.com/>

### **N.V. Tohnichi Europe S.A.**

Industrieweg 27, Boormeerbeek, B-3190 Belgium  
Tel +32 16 60 66 61  
Fax +32 16 60 66 75  
E-mail [tohnichi-europe@online.be](mailto:tohnichi-europe@online.be)

### **Tohnichi America Corporation**

1303 Barclay Boulevard, Buffalo Grove, IL 60089-4501 USA  
Tel +1 847 947 8560  
Fax +1 847 947 8572  
E-mail [inquiry@tohnichi.com](mailto:inquiry@tohnichi.com)  
Website <http://tohnichi.com>

### **Tohnichi Shanghai Mfg. Co., Ltd.**

东仁扭矩仪器 ( 上海 ) 有限公司  
RM. 5 No. 99 Nong1919, Du Hui Road, Minhang, Shanghai, P.R. China  
Tel +86 21 3407 4008  
Fax +86 21 3407 4135  
E-mail [sales@tohnichi-sh.com](mailto:sales@tohnichi-sh.com)  
Website <http://www.tohnichi-sh.com>